



Nevada National Security Site Emergency Management Overview

--

Asylum Road-17 Exercise Overview

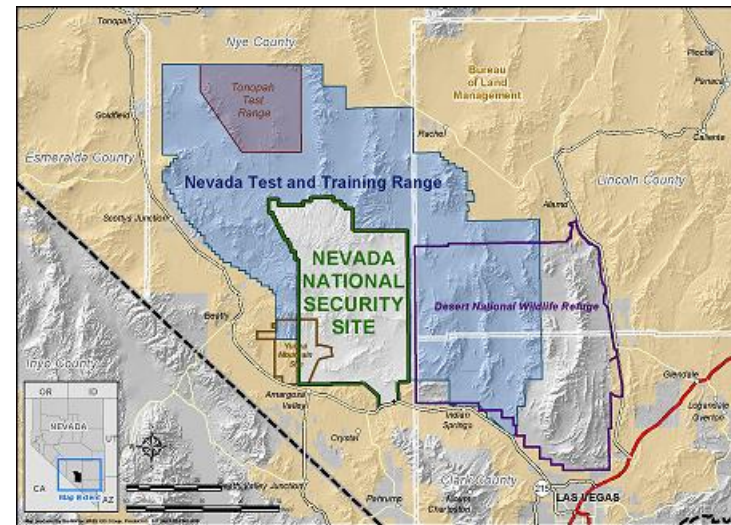


Nevada National Security Site
Managed and Operated by National Security Technologies, LLC



Welcome

- This presentation will provide you an overview of
 - The Nevada National Security Site (NNSS)
 - NNSS Facilities, Hazards and Protective Actions
 - Emergency Management Program Review
 - Sitewide Exercise – Asylum Road 17



NNSS Facilities, Hazards and Protective Actions

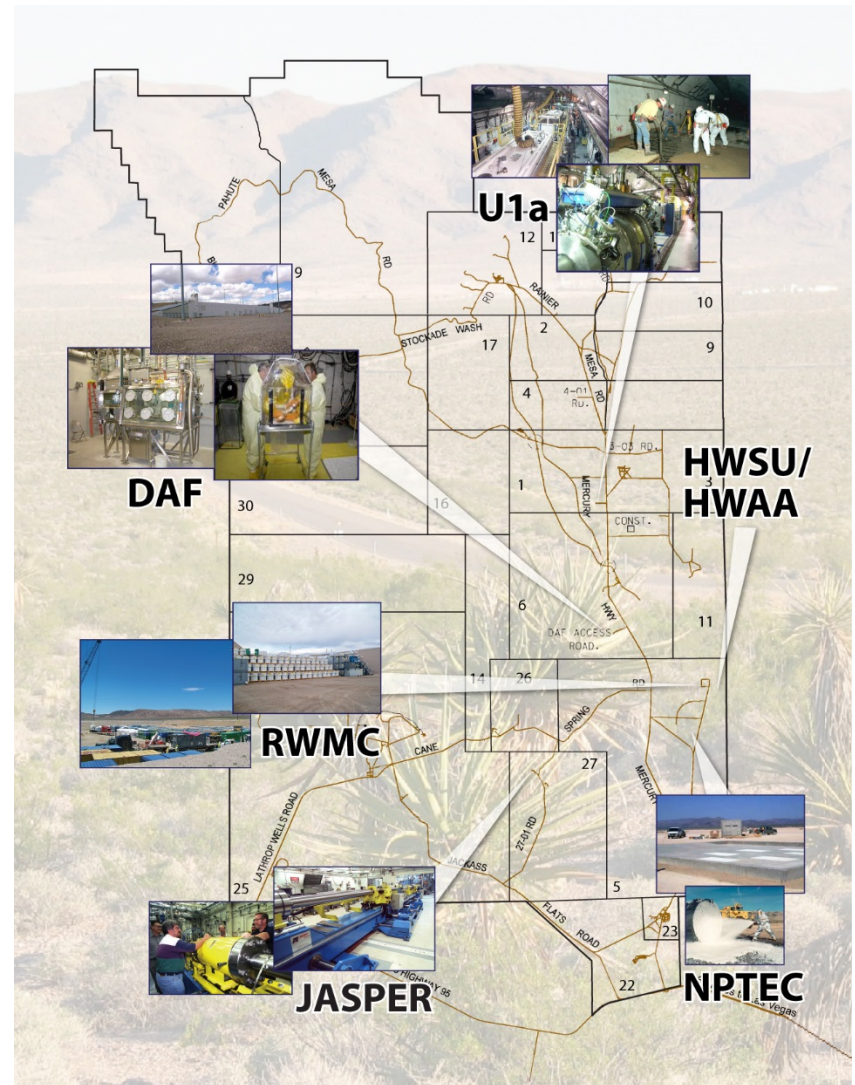


Nevada National Security Site

Managed and Operated by National Security Technologies, LLC

NNSS Facilities

- Device Assembly Facility (DAF)
- Hazardous Waste Storage Unit (HWSU)/ Hazardous Waste Accumulation Area (HWAA)
- Joint Actinide Shock Physics Experimental Research Facility (JASPER)
- Nonproliferation Test and Evaluation Complex (NPTEC)
- Radioactive Waste Management Complex (RWMC)
- U1a Complex (underground)



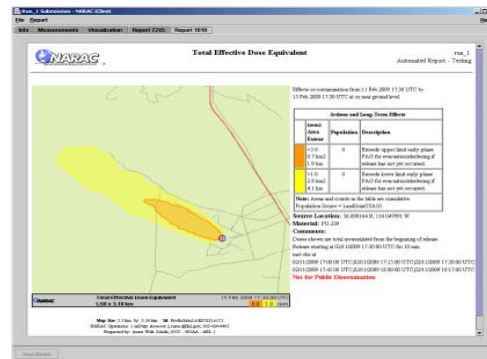
NNSS Hazards

- Nuclear/Radiological
- Low Level and Mixed Low Level Waste
- Chemical Hazards
- Explosives
- Legacy Contamination Sites



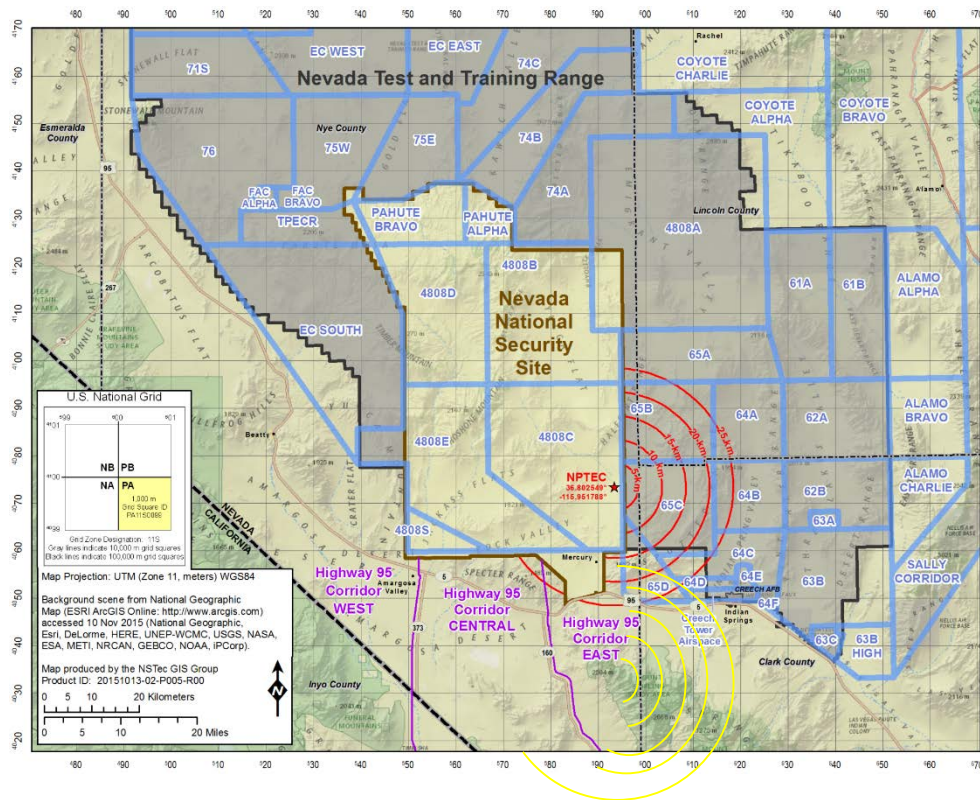
Assessing Hazards – Emergency Action Levels (EALs)

- Facility-specific, predetermined, observable criteria
- Used to promptly detect, recognize, and determine the classification of an incident
- Assist with determining rapid Protective Actions/Protective Action Recommendations
- Scenarios developed and consequences calculated for:
 - Spill
 - Fire
 - Explosion



PAR Card Program Overview

- Nine locations with potential for offsite consequences warranting PARs
 - DAF
 - HWSU
 - NPTEC (6 different locations)
 - Transportation Incidents
- Concentric rings around facilities
 - Rings are at 5 km, 10 km, 15 km, 20 km, 25 km



Estimated Time Until Plume Arrival (hours:minutes)

Stability Class	5 km	10 km	15 km	20 km	25 km
A	01:02	02:04	03:06	04:08	05:10
B	00:46	01:33	02:19	03:06	03:53
C	00:32	01:05	01:37	02:10	02:43
D	00:23	00:47	01:10	01:34	01:57
E	04:52	09:45	14:38	19:30	>24:00
F	03:21	06:43	10:05	13:27	16:49

Recommended Roadblock Mile Markers

Road	5 km	10 km	15 km	20 km	25 km
U.S. Highway 95	N/A	N/A	N/A	N/A	CL 132.14 NY 9
Nevada State Route 160	N/A	N/A	N/A	N/A	N/A
Nevada State Route 373	N/A	N/A	N/A	N/A	N/A

NNSS Emergency Management Program



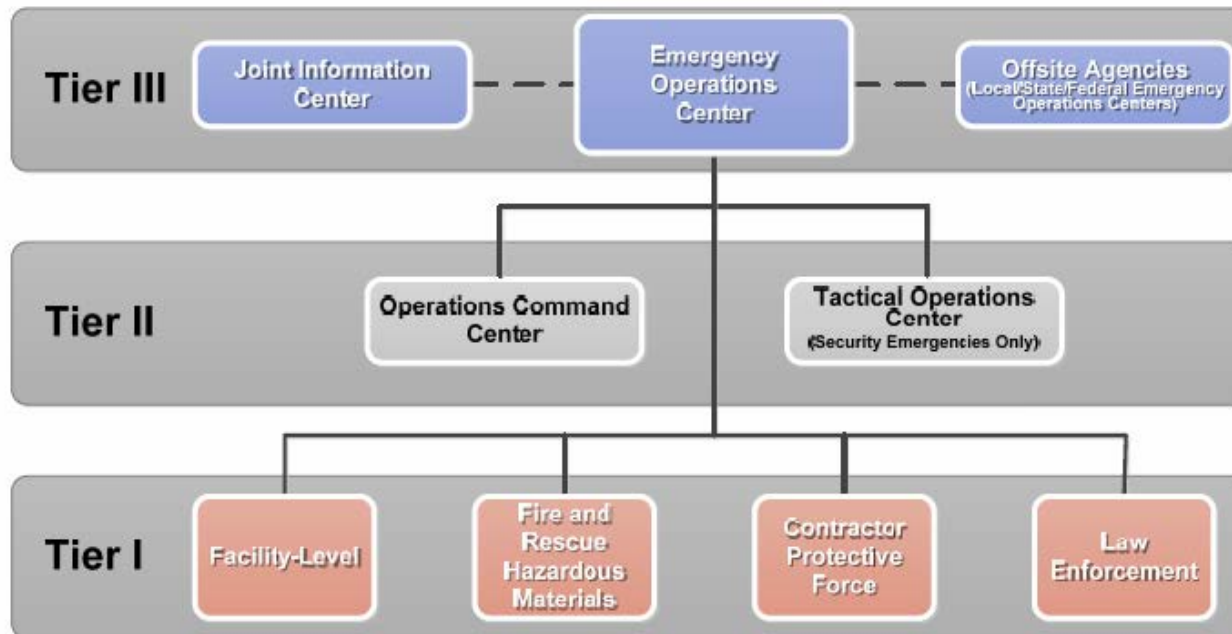
Nevada National Security Site

Managed and Operated by National Security Technologies, LLC



Emergency Response Organization

- Operations Command Center Fire Dispatch takes onsite emergency calls
- Response based on Incident Command System / Unified Command Structure
- Three-tiered organizational structure



Tier I: Facility and First Responders

- Local Emergency Director (LED)
- Emergency Action Team (EAT)

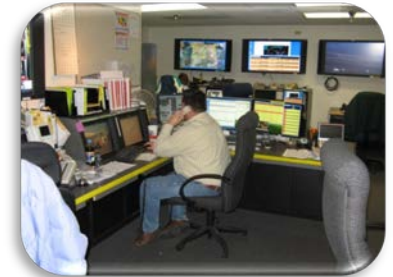


- NNSS Fire and Rescue
- Contractor Protective Force
- Nye County Sheriff's Office



Tier II: Emergency Facilities – Operations Command Center

- Primary point of contact for emergency notifications (24/7 operations), and offsite notifications
- 911 Operator receives emergency calls and dispatches Fire and Rescue assets
- Determines categorization/classification and protective actions based on Emergency Action Levels
- Activates Emergency Response Organization
- Monitors air and ground activities on NNSS and coordinates emergency response air traffic through appropriate air traffic control centers
- Responsible for coordinating Unmanned Aircraft System (UAS) support for the Incident Commander



24/7 Operations

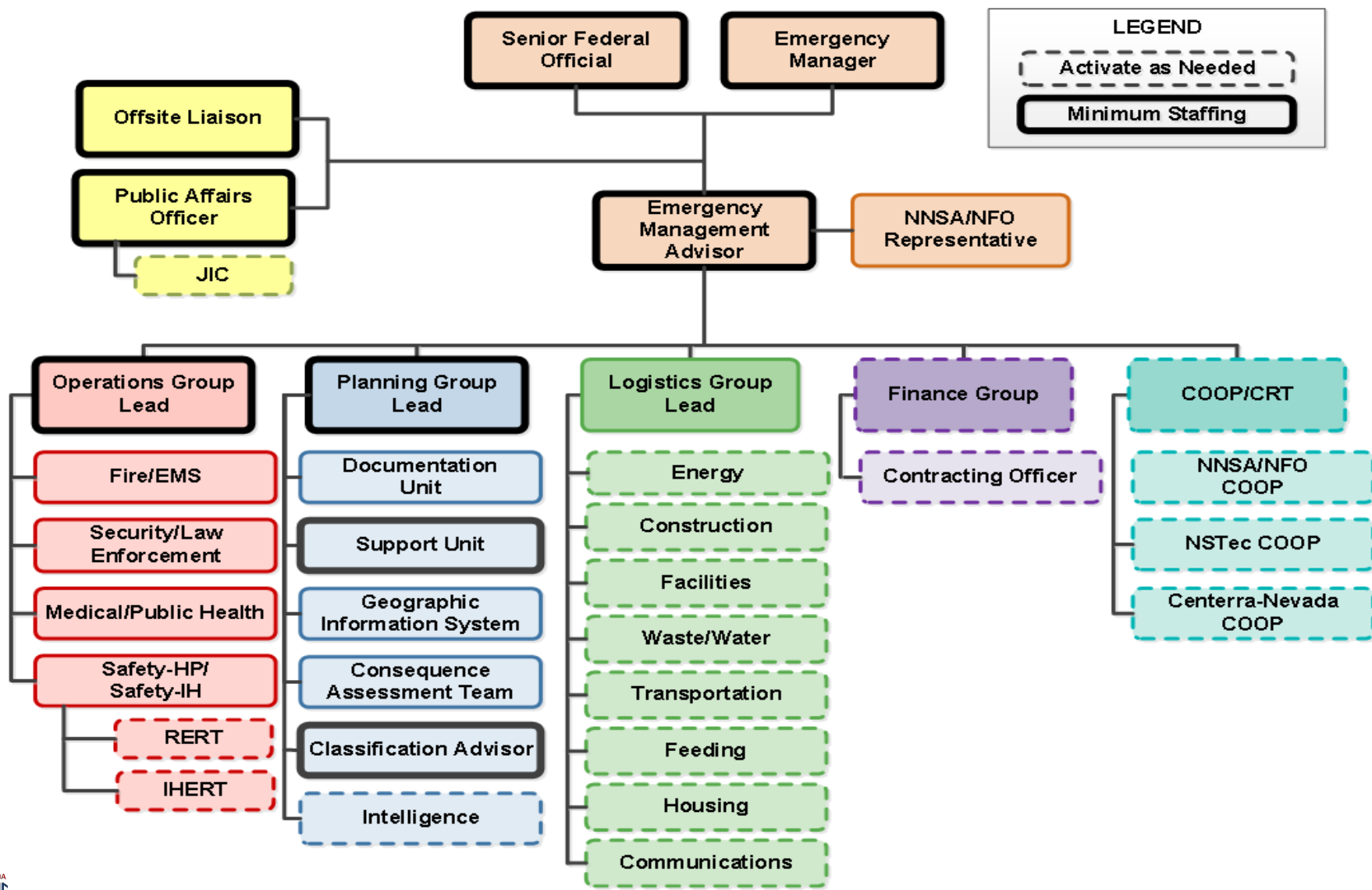


Tier III: Emergency Facilities – Emergency Operations Center

- Two locations:
 - NNSS
 - NLVF
- Primary roles include:
 - Supporting the Incident Commander
 - Taking action to protect people and property within site boundaries
 - Planning and coordinating field team (chemical/radiological) response
 - Communicating with offsite agencies
 - Enacting mutual aid agreements with offsite agencies
 - Planning recovery activities
 - Coordinating news releases, social media and press conferences



Tier III: Emergency Facilities – Emergency Operations Center



Exercises

- NNSS maintains a robust exercise program
 - High Hazard Facilities and ERO components are tested annually through a formal evaluation
- Supports regional exercises with offsite partners



ASYLUM ROAD-17 Full Scale Exercise



Asylum Road-17 Full Scale Exercise

Scope

- Multiple Emergency Events
 - Transportation accident onsite results in offsite consequences
 - Earthquake causes heavy damage in the Mercury and U1a
- U1a Evacuation
- 16 Buildings in Mercury Evacuated
- Emergency Operations Center / Operations Command Center relocated
- Integration of mutual aid partners from across Southern Nevada

Asylum Road-17 Participants

NNSS Participants

- Facility Occupants
 - Mercury Campus
 - U1a Facility
- NNSS Fire and Rescue
- Contractor Protective Force
- Industrial Hygiene Emergency Response Team
- Mine Rescue Team
- Nye County Sheriff's Office
- Operations Command Center
- Emergency Operations Center
- Joint Information Center

External Partners (Field Play)

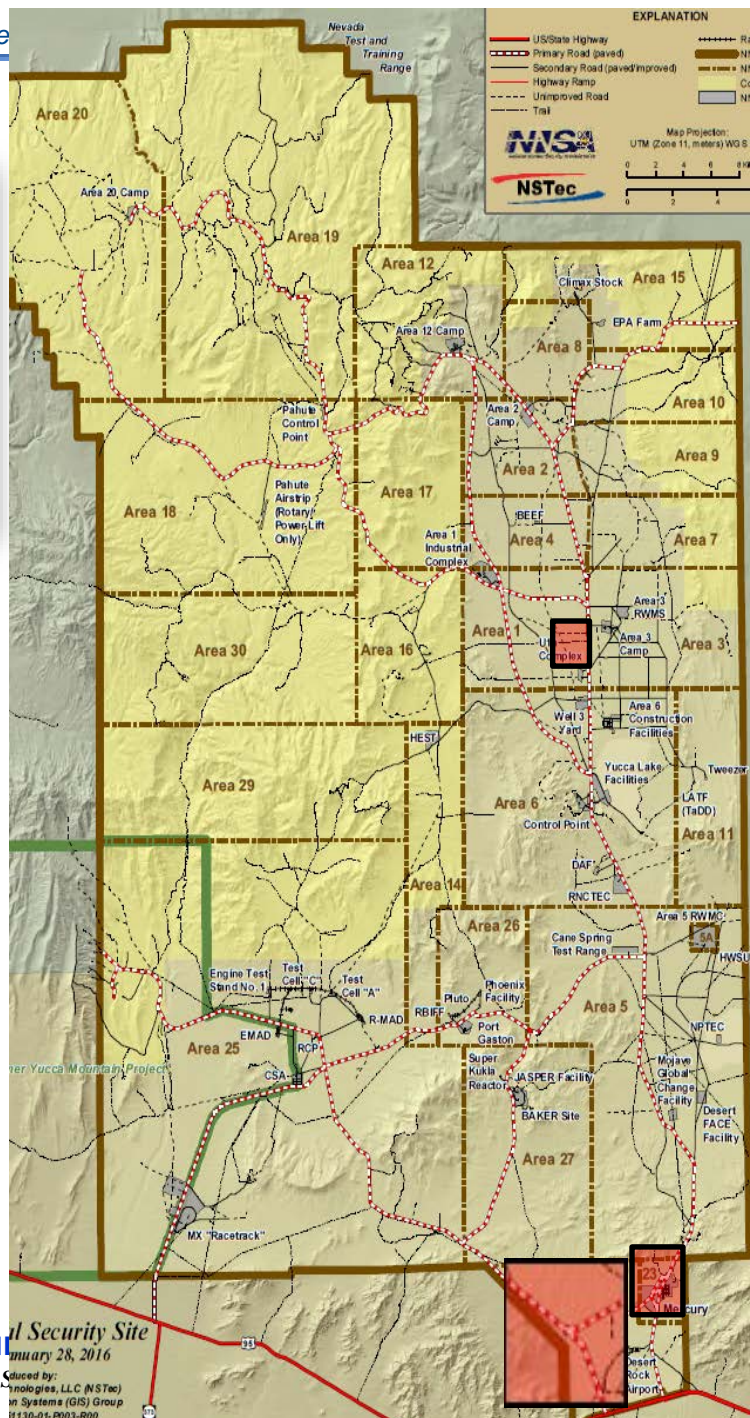
- Nye County Emergency Services
- Clark County Fire Department
- Las Vegas Fire and Rescue
- Mercy Air Helicopter Medevac

External Partners (Notification)

- Nye County Office of Emergency Management
- Clark County Office of Emergency Management
- Lincoln County Office of Emergency Management
- Nellis Air Force Base Command Post
- State of Nevada Watch Office
- Department of Energy HQ Watch Office



**Area 22
Chemical
Transportation**



**Area 1 U1a
Collapse**



**Area 23 Multiple building
collapses**

“Firsts”

- Evacuating large NNSS population center
- Number of Participants (750+)
- Integrated Technical Rescue with multiple fire departments
- Distance between multiple event scenes (3 events spanning 30+ miles)
- Establishing “Area Command” to manage multiple incident scenes

Opportunities

- More pre-exercise training for controllers and role-players
- Enhance NNSS Fire and Rescue capability for responding to structural collapses
- Additional training and procedures for Area Command and complex incidents
- Increase frequency of field monitoring team training (Radiological, Chemical)
- Increase frequency of Emergency Operations Center cadre training

Summary

- Asylum Road-17 was a rigorous test of our Emergency Response Organization
- Responders both onsite and offsite were tested with a challenging scenario
- Simulations provided large and realistic incident scenes
- Enhanced safety and security considerations were heavily integrated into the planning process

Any Questions?

Contact Information Below:

National Security Administration, Nevada Field Office

Chudi Onowu, Federal Point of Contact
NNSA/NFO Emergency Management Program Manager
(702) 295-3108

National Security Technologies, LLC (Contractor to U.S. DOE)

William Knipper, Manager
Emergency Planning and Preparedness
(702) 295-4819